



ADMIRAL
STAGING

MEAT- RACK

Store and transport your moving heads, lighting bars and single luminaires with our Meatrack cart. Depending on the amount and size of your fixtures, you can build your ideal Meatrack in your desired height, width and length. Choose hanging tubes, in aluminum or steel, to create the desired storage space for your fixtures.



KEY FEATURES

Modular construction

Made of fork-side panels and interchangeable length profiles, the Meatrack has a strong and adjustable structure for various equipment and transport needs. Pre-drilled holes let you place hanging tubes at different heights for a better use of space.

Integrated top and bottom support

The length profiles have a built-in ledge which enables a plate (not included) to be added at the top or bottom of the rack. This creates a flat surface for extra tools and accessories.

Combined fixture and cable configuration

The Meatrack can be set up as a combined cart for fixtures and cables, helping to reduce the number of transport units and making loading and unloading more efficient.

www.admiralstaging.com

TECHNICAL DATA



1 CHOOSE SIDE PANELS

Fork-side panel set of 2 (width 60 cm)

Heights available:	112 cm	112 cm	183 cm	183 cm	203 cm	203 cm
Article code:	WAFSF12A	WAFSF12B	WAFSF15A	WAFSF15B	WAFSF21A	WAFSF21B
With centre bracket:	no	yes	no	yes	no	yes
Dimensions (W x H):	600 x 981 mm		600 x 1666 mm		600 x 1866 mm	
Material:	steel					
Weight:	22.60 kg	25.29 kg	30.36 kg	36.64 kg	41.09 kg	42.48 kg
Colour:	black gloss 30% (RAL 9005) / orange gloss 30% (RAL 2008)					
Finish:	powder coated					
Included:	bolt set					

Fork-side panel set of 2 (width 80 cm)

Heights available:	183 cm	183 cm	203 cm	203 cm
Article code:	WAFSF17A	WAFSF17B	WAFSF31A	WAFSF31B
With centre bracket:	no	yes	no	yes
Dimensions (W x H):	800 x 1666 mm		800 x 1866 mm	
Material:	steel			
Weight:	36.20 kg	42.48 kg	42 kg	49.09 kg
Colour:	black gloss 30% (RAL 9005) / orange gloss 30% (RAL 2008)			
Finish:	powder coated			
Included:	bolt set			



2 CHOOSE LENGTH PROFILES

Length profiles set of 4

Lengths available:	80 cm	160 cm	180 cm	210 cm
Article code:	WALPSL080	WALPL160	WALPL180	WALPL210
EAN:	8720094427744	8720094422787	8720094422831	8720094422848
Dimensions (L x W x H):	773 x 20 x 40 mm	1588 x 51 x 45 mm	1788 x 51 x 45 mm	2073 x 51 x 45 mm
Material:	steel			
Weight:	4.50 kg	14.07 kg	16.66 kg	19.60 kg
Colour:	black gloss 30% (RAL 9005)			
Finish:	powder coated			
Bolt type:	M8			
Compatible with:	Meatrack and Cable cart			
Included:	4 length profiles			



3 CHOOSE CASTORS

Castors set of 4

Sets available:	2 x Swivel with brake 2 x Swivel no brake		4 x Swivel with brake	
Article code:	WACS100B	WACS125B	WACS100A	WACS125A
Max load*:	200 kg per castor	220 kg per castor	200 kg per castor	220 kg per castor
Diameter mm:	Ø 100	Ø 125	Ø 100	Ø 125

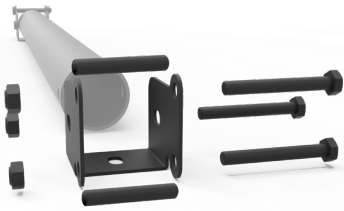
*the Max load is determined according to the applicable standards and guidelines.



4 CHOOSE HANGING TUBES

Hanging tubes with fork set

Lengths available:	80 cm	160 cm	180 cm	210 cm
Article code:	WARTS0080	WARTS0160	WARTS0180	WARTS0210
Max load tube:	100 kg			
Diameter tube:	Ø 50 mm	Ø 50 mm	Ø 50 mm	Ø 48 mm
Length tube:	694 mm	1497 mm	1700 mm	1997 mm
Material (tubes):	aluminium	aluminium	aluminium	steel
Material (fork set):	steel			
Weight:	0.82 kg	1.84 kg	2.35 kg	7.56 kg
Colour:	black gloss 30% (RAL 9005)			
Finish:	powder coated			
Bolt type:	M8			
Compatible with:	Meatrack length 80 cm	Meatrack length 160 cm	Meatrack length 180 cm	Meatrack length 210 cm
Included:	2 x support fork set with bolts			



*bolt set is included in all 4 sets

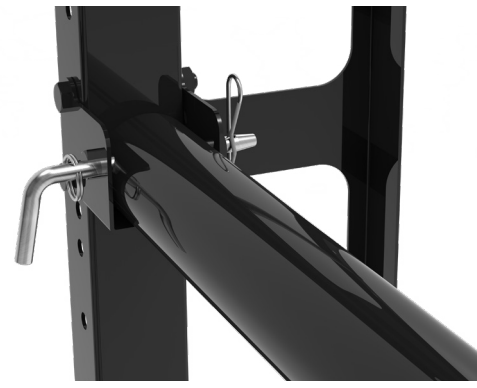
The Meatrack has a maximum load capacity of 400 kg. Each hanging tube supports up to 100 kg.

When installing the fork sets, fix them securely to the fork-side panels using bolts. Spacer tubes are recommended to prevent overtightening and possible deformation of the panels.

As an alternative, the forks can also be mounted using a **safety pin**, allowing faster repositioning of the hanging tubes.



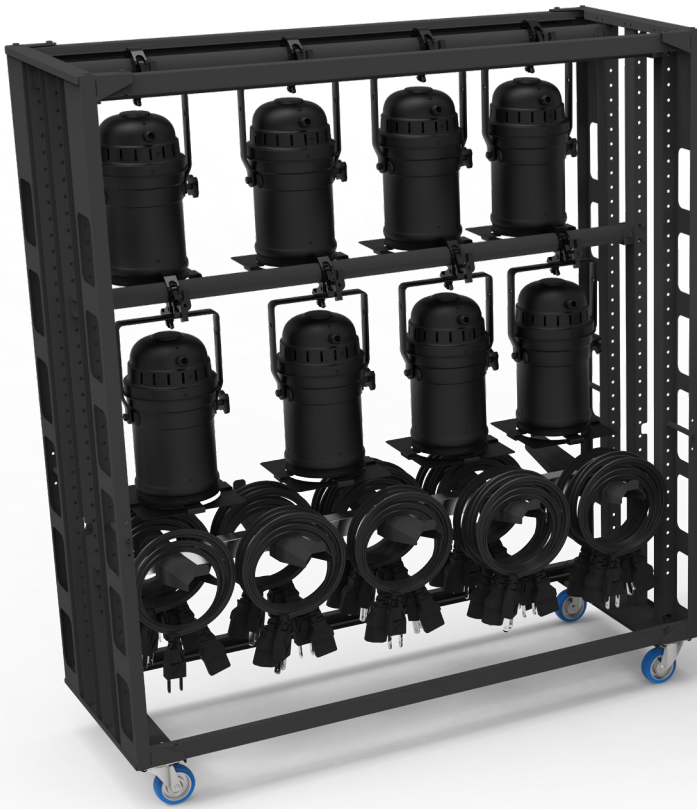
Check out our **video** for more details.



Centre bracket set of 2*

Heights available:	H112	H183	H203
Article code:	WAM2P52	WAM2P04	WAM2P05
EAN:	8720094423333	8720094420783	8720094425122
Dimensions: (W x D x H)	50 x 40 x 970 mm	50 x 40 x 1654 mm	50 x 40 x 1854 mm
Material:	steel		
Weight:	3.69 kg	6.28 kg	7.09 kg
Colour:	black gloss 30% (RAL 9005)		
Finish:	powder coated		
Bolt type:	M5		
Compatible with:	Meatrack and Cable cart	Meatrack and Cable cart	Meatrack and Cable cart
Included:	screw set		

* centre brackets can be purchased separately and mounted on fork-side panels without one



Combined fixture and cable configuration



Integrated top and bottom support



ADMIRAL
STAGING

| www.admiralstaging.com | Josink Kolkweg 10 | 7545 PR Enschede | The Netherlands | Tel: +31 53 4 301 201 |