



**ADMIRAL**  
STAGING

# STORAGE CART 1, 2, 3 UNIT SYSTEM

Organize, store and transport your equipment with our modular Storage cart system. Available in 1 unit, 2 unit and 3 unit configurations with a fixed height of 112 cm. The configurable interior allows flexible crate positioning. Each cart is supplied with a top lid and can be equipped with heavy-duty swivel castors.



## KEY FEATURES

### **Customizable and adjustable**

Available in 1 unit, 2 unit and 3 unit configurations to match required capacity. Crate positions can be adjusted at any time without modifying the frame.

### **Protective and functional top lid**

Supplied with a top lid as standard, protecting the upper crate against dust and dirt. The flat surface allows safe stacking and can be used as a practical work surface.

### **Sturdy, secure crates**

Steel drawer profiles guide and support each crate on both sides. The crates cannot slide out unintentionally and must be slightly lifted for removal.

[www.admiralstaging.com](http://www.admiralstaging.com)



## TECHNICAL DATA

### 1 CHOOSE FRAME

#### Storage cart set 1, 2, 3 unit H 112 incl top lid

Unit variations:	1 unit	2 unit	3 unit
Article code:	WASCU101	WASCU102	WASCU103
Dimensions (L x W x H) including castors:	600 x 528 x 1146 mm	600 x 984 x 1146 mm	600 x 1440 x 1146 mm
Weight:	28.87 kg	39.33 kg	50.90 kg

Set includes:\*,\*\*

#### 2 x Slim-line panels with handle

Article code:	WAM2P72
EAN code:	8720094423272
Dimensions (W x H) :	600 x 981 mm
Material:	steel
Weight:	9.09 kg
Colour:	black gloss 30% (RAL 9005) / orange gloss 30% (RAL 2008)
Finish:	powder coated

#### Length profiles set of 4

Article code:	WALPL050	WALPL100	WALPL140
EAN code:	8720094422732	8720094422756	8720094422763
Dimensions (L x W x H):	509 x 51 x 45 mm	965 x 51 x 45 mm	1421 x 51 x 45 mm
Material:	steel		
Weight:	5 kg	9.04 kg	13.04 kg
Colour:	black gloss 30% (RAL 9005)		
Finish:	powder coated		
Bolt type:	M8		

#### Storage cart unit top lid

Article code:	WAM2SA63	WAM2SA65	WAM2SA66 (set of 2)
EAN code:	8720094423296	8720094423302	8720094423319
Length:	600 mm		
Thickness:	10 mm		
Width:	528 mm	984 mm	719 mm (per lid)
Material:	physiochemical board		
Weight:	6.09 kg	9.05 kg	16.62 kg
Colour:	black		
Bolt type:	M8		

#### Mid drawer post 2/3 unit Storage cart set of 2\*\*\*

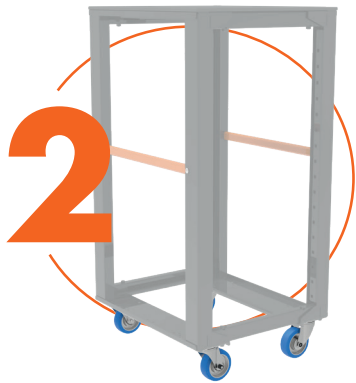
Article code:	WAM2P59
EAN code:	8720094423326
Dimensions (W x D x H):	45 x 27 x 908 mm
Material:	steel
Weight:	2.46 kg
Colour:	black gloss 30% (RAL 9005)
Finish:	powder coated

\* boltset included

\*\* set is delivered in parts

\*\*\* the Mid drawer post 2/3 unit Storage cart set of 2 is included only with the 2 and 3 unit sets

# 2



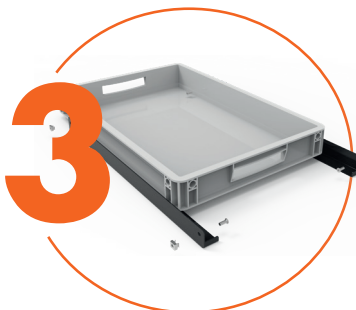
## 2 CHOOSE CASTORS

### Castors set of 4

Sets available:	2 x Swivel with brake 2 x Swivel no brake		4 x Swivel with brake	
Article code:	WACS100B	WACS125B	WACS100A	WACS125A
Max load*:	200 kg per castor	220 kg per castor	200 kg per castor	220 kg per castor
Diameter mm:	Ø 100	Ø 125	Ø 100	Ø 125

\*the Max load is determined according to the applicable standards and guidelines.

# 3



## 3 CHOOSE STORAGE CRATE SETS

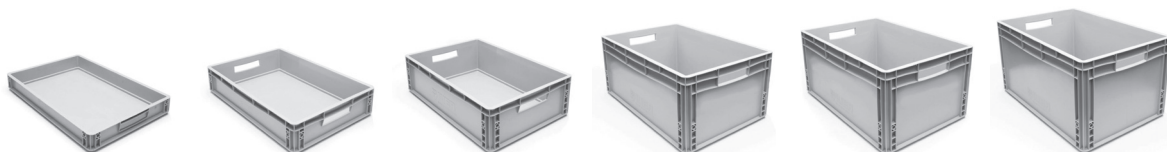
### Plastic crate incl drawer profile set

Article code:	WASCRS07	WASCRS12	WASCRS17	WASCRS22	WASCRS27	WASCRS32
---------------	----------	----------	----------	----------	----------	----------

Set includes:

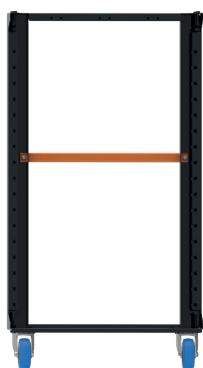
#### Drawer profile set of 2

Article code:	WAM2R06
EAN code:	8720094423241
Dimensions (L x W x H):	587 x 34 x 38 mm
Material:	steel
Weight:	1.99 kg
Colour:	black gloss 30% (RAL 9005)
Finish:	powder coated
Bolt type:	M6
Included:	2 drawer profiles, 4 bolts, 4 nuts

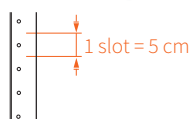


#### Plastic crates

	2 SLOTS	3 SLOTS	4 SLOTS	5 SLOTS	6 SLOTS	7 SLOTS
Article code:	WAM2R67	WAM2R68	WAM2R69	WAM2R70	WAM2R71	WAM2R72
EAN code:	8720094429489	8720094429496	8720094429502	8720094429519	8720094429526	8720094429533
Dimensions (W x D x H):	40 x 60 x 7.5 cm	40 x 60 x 12 cm	40 x 60 x 17 cm	40 x 60 x 22 cm	40 x 60 x 27 cm	40 x 60 x 32 cm
Material:	polypropylene					
Weight:	1.02 kg	1.26 kg	1.51 kg	1.76 kg	2.17 kg	2.41 kg
Colour:	grey					



17 & 18 The upper slot counts as  
17 & 18 2 drawer slots,  
18 slots in total.



**ADMIRAL**  
STAGING

| www.admiralstaging.com | Josink Kolkweg 10 | 7545 PR Enschede | The Netherlands | Tel: +31 53 4 301 201 |