



**ADMIRAL**  
STAGING

# STORAGE CART

Organize, store and transport your tools, supplies and other essentials with our Storage Cart. Using our modular system, you can build your ideal Storage cart in three heights, 110 cm, 183 cm or 203 cm. Plastic crates of six different sizes can be mixed and matched to customize the interior of the cart.



## KEY FEATURES

### **Design your ideal cart**

Build your Storage cart in two different heights and design its interior in a configuration that best suits your needs.

### **Flexibility**

The storage configuration can be quickly readjusted based on the requirements of each job by changing the crates combination.

### **Sliding crates**

Access your tools easily by sliding the crates out on both sides. Designed to be slightly raised before pulling them out, they won't slide out when you move the cart.

[www.admiralstaging.com](http://www.admiralstaging.com)

## TECHNICAL DATA



### 1 CHOOSE FRAME HEIGHT

#### Storage cart set with toplid

Heights available:	110 cm	183 cm	203 cm
Article code:	WASCSH11L	WASCSH18L	WASCSH23L
Dimensions mm:	600 x 492 x 1096	600 x 792 x 1830	600 x 492 x 2030
Weight:	26.72 kg	33.12 kg	36.12 kg

Set includes:

#### 2x Slim-line panels with handle

Heights available:	110 cm	183 cm	203 cm
Article code:	WAM2P64	WAM2P82	WAM2P65
EAN code:	8720094425245	8720094420950	8720094425252
Material:	powder coated steel		
Dimensions mm:	600 x 1100 x 127	600 x 1830 x 127	600 x 2030 x 127
Weight:	8.8 kg	12.0 kg	13.5 kg

#### Length profiles L50 set of 4

Article code:	WALPSL050		
EAN code:	8720094429588		
Material:	powder coated steel		
Dimensions mm:	500 x 20 x 40		
Weight:	3 kg		

#### Storage cart top lid black

Article code:	WAM2SA64		
EAN code:	8720094429991		
Material:	physiochemical board		
Dimensions mm:	600 x 492 x 10		
Weight:	5.9 kg		

\* boltset included

\*\*set is delivered in parts



### 2 CHOOSE CASTORS

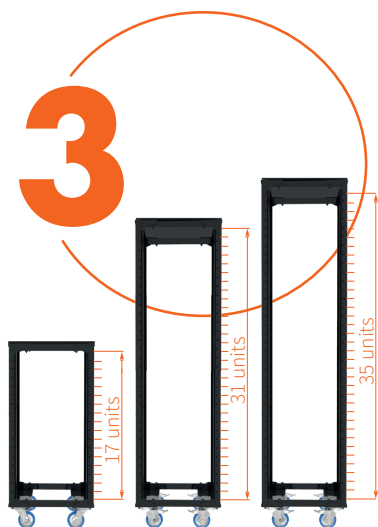
#### Castors set of 4

Sets available:	2 x Swivel with brake 2 x Swivel no brake	4 x Swivel with brake		
Article code:	WACS100B	WACS125B	WACS100A	WACS125A
WLL:	200 kg per castor	220 kg per castor	200 kg per castor	220 kg per castor
Diameter mm:	Ø 100	Ø 125	Ø 100	Ø 125

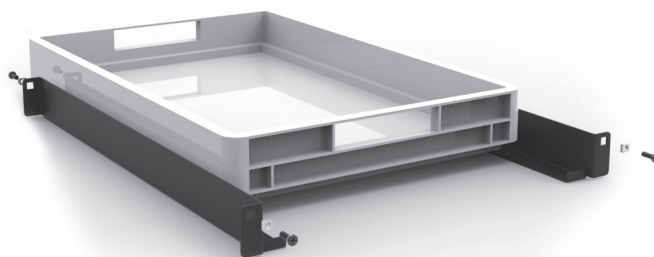
### 3 CHOOSE STORAGE CRATE SETS

#### Plastic crate with drawer profile set

Article code:	WACRS007	WACRS012	WACRS017	WACRS022	WACRS027	WACRS032
Material: crates:	plastic					
drawer:	powder coated steel					



1 unit = 5 cm						
	2 UNITS 60 x 40 x 7.5 cm	3 UNITS 60 x 40 x 12 cm	4 UNITS 60 x 40 x 17 cm	5 UNITS 60 x 40 x 22 cm	6 UNITS 60 x 40 x 27 cm	7 UNITS 60 x 40 x 32 cm



Drawer profile included with plastic crate set



**ADMIRAL**  
STAGING

| www.admiralstaging.com | Josink Kolkweg 10 | 7545 PR Enschede | The Netherlands | Tel: +31 53 4 301 201 |